



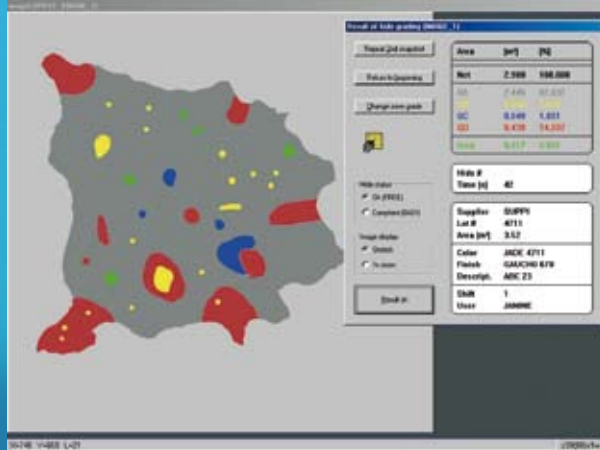
**Settle back into your armchair.
An Expert optimizes your production.**

Expert Systemtechnik GmbH

upholstery / furniture

scanEXPERT static table: Your receipt control of hides and quality assurance with efficiency.

- Control your incoming leather and administrate your leather stock.
- Your quality assurance starts with the scanning of your leather.
- Optimize the yield of your hides.
- Reduce your claims.
- Make your leather data available across your global enterprise.

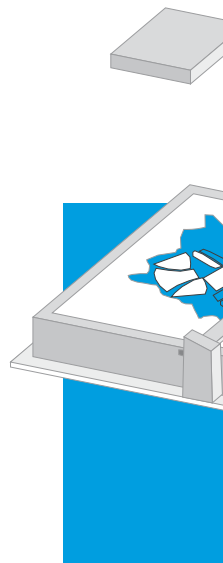


pre-selectEXPERT: Classify your leather into categories.

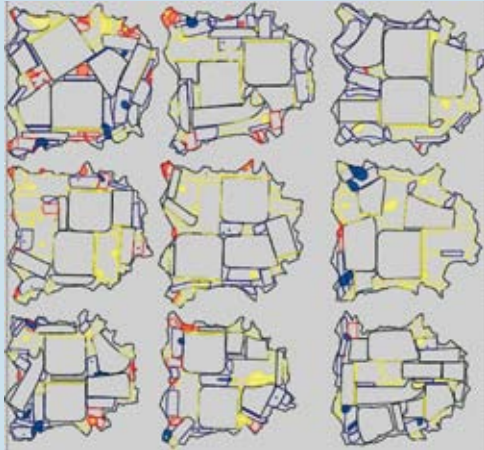
- Classify your assorted leather hides automatically in a few seconds.
- Set the parameter for the internal classification of your leather.
- Identify your leather precisely and very easily.
- Choose your leather for the creation of orders from up to three categories.
- Be certain in the global administration of your different production lines of business.



scanning



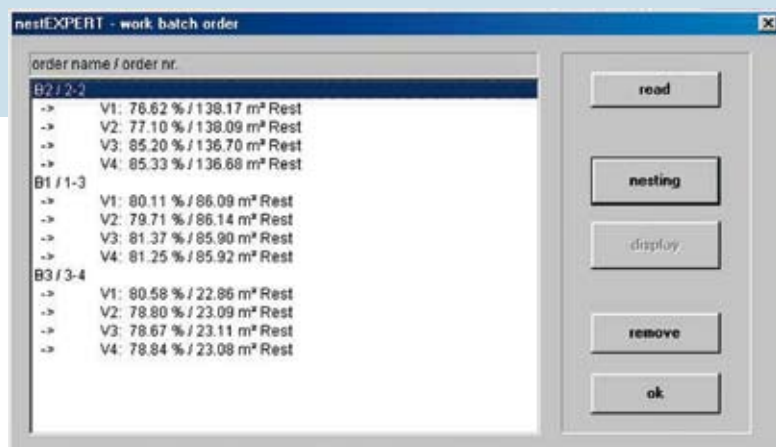
nestEXPERT multinest: Your maximum yield when nesting hides simultaneously.



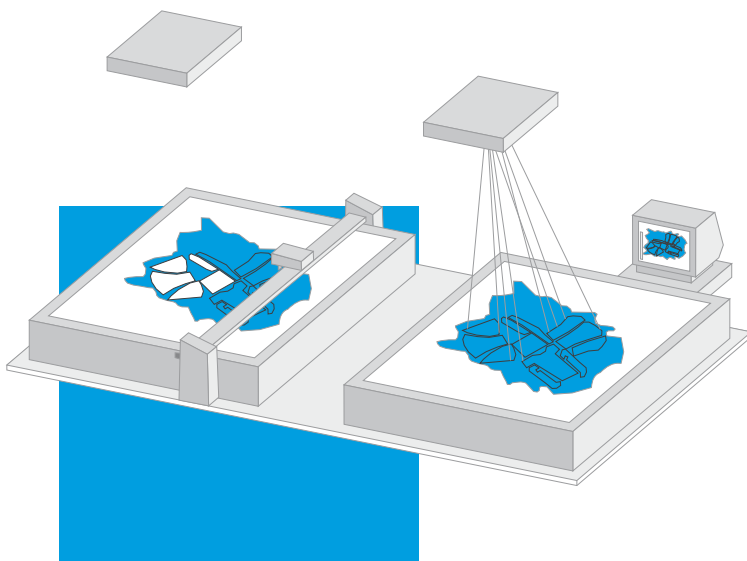
- Increase your efficiency and productivity automatically.
- Optimize 2-100 hides simultaneously.
- Discover the yield of all hides in the order before cutting.
- Use multinest for your precalculation.
- Combine automatic and interactive optimization.

nestEXPERT hypernest: 24 hours at your disposal.

- Make use of hypernest 24 hours a day. Without an operator.
- Profit from all multinest software advantages.
- Optimize the same leather hides using four different algorithms.
- Get the most from your best employees.
- Use hypernest software for your precalculation.



The perfect solution for your leather with shade variations is called nestEXPERT visualnest.

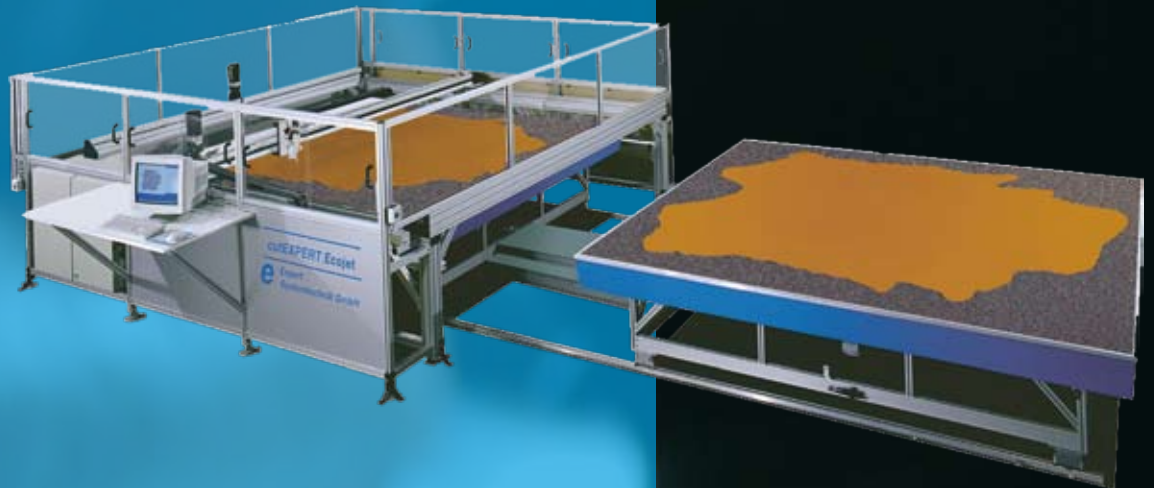


- Optimize your leather directly on the skin controlled by laser.
- Nest according to variations of colours and grains on the leather.
- Combine automatic and interactive optimization.
- Discover the yield of each hide prior to cutting it.
- Keep in touch with your production any time.



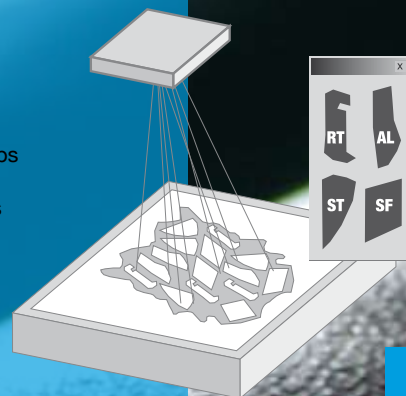
Multifunctional cutting with cutEXPERT ecojet.

- High speed and constant precision when cutting with waterjet-technology.
- Cut the contours of your patterns exactly regardless of the thickness of your leather.
- Average cutting time 1.5 to 3 minutes per hide.
- No use of plastic foil.
- Hardly any tool changes.
- Reduce your costs and relieve the environment.
- Allow yourself the flexibility of different materials like laminated materials, carton, rubber, composites, foam, foil and many more.



With pick-upEXPERT you sort all of your cut pieces for the next step directly after cutting.

- You sort all cut pieces for the sewing directly after cutting.
- Make use of the optional sorting system at your waterjet cutter.
- The laser shows you your individual groups of patterns.
- Increase the efficiency of your employees and avoid annoying after-sorting.

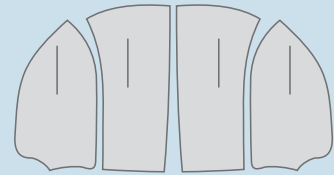


Cut several material sheets at the same time on only one cutting table with skinEXPERT.

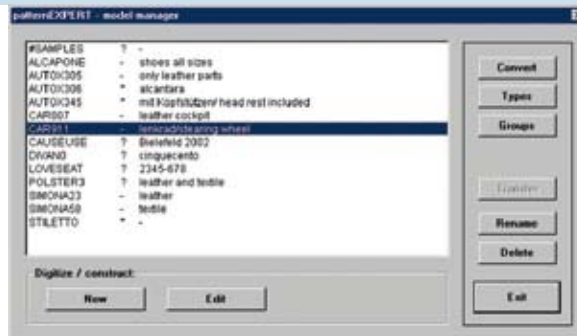
- Cut several small hides simultaneously on only one table.
- Make use of this option for cutting small split- or bycast leather hides.
- Use skin-EXPERT for cutting your samples on carton.
- Benefit from all advantages of the preceding Expert software stages.

cutting

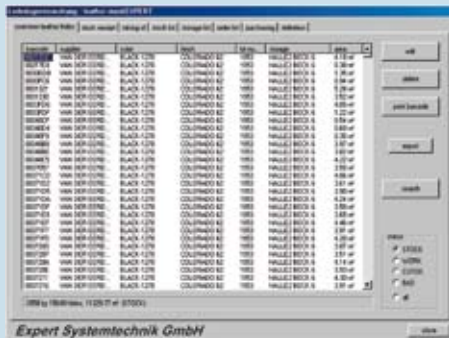
Your pattern manager: flexible and simple with patternEXPERT.



- Optimize the data capture of your patterns.
- Benefit from the clearly defined model manager.
- Be flexible with any modification of your patterns.
- Import your data from other CAD systems without complications.
- Use your model data across many industries.
- Create your groups according to your sewing plan.



scanEXPERT leatherstock: Your efficient leather stock management.



- Be flexible in the allocation of leather to orders.
- Control your leather consumption and manage your leather stock automatically.
- Control your leather stock values straightaway with one overview.
- Use this efficient support for physical stocktaking.
- Combine scanEXPERT leatherstock with your current management system.

dataEXPERT: Your overview of production and management of leather stock.

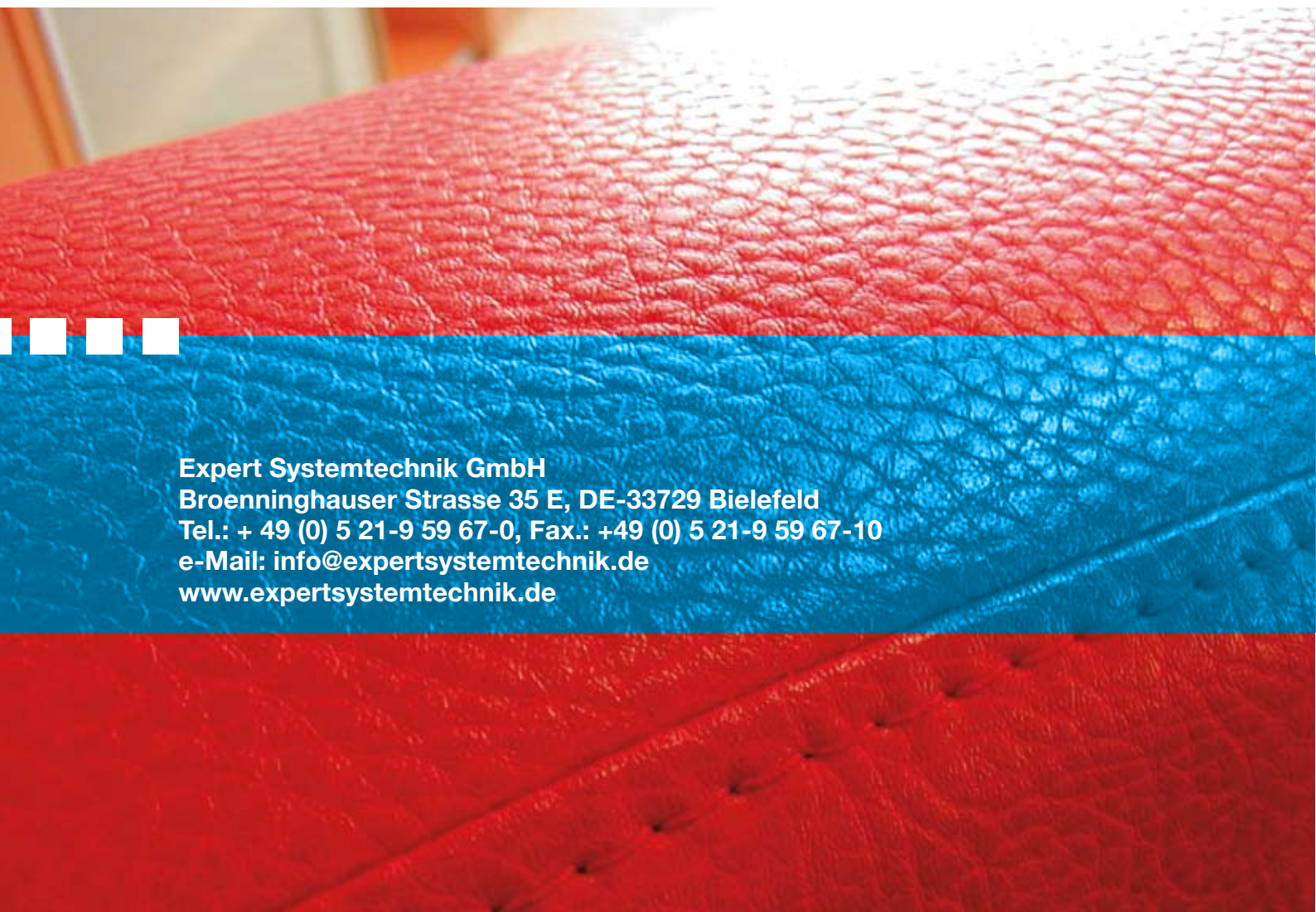
- Use the detailed production overview when cutting leather hides.
- Be in picture about the daily efficiency of your production process.
- Inform yourself about historic leather consumption figures.
- Use the complete database for calculations in your purchase department.
- Administrate your leather stock and compare your suppliers.



controlling



Your ideas. Our solutions.
Your profit.



Expert Systemtechnik GmbH
Broeninghauser Strasse 35 E, DE-33729 Bielefeld
Tel.: + 49 (0) 5 21-9 59 67-0, Fax.: +49 (0) 5 21-9 59 67-10
e-Mail: info@expertsystemtechnik.de
www.expertsystemtechnik.de