



Settle back into your armchair

An **expert** optimizes
your production

Upholstery / Furniture

English

expert
systemtechnik

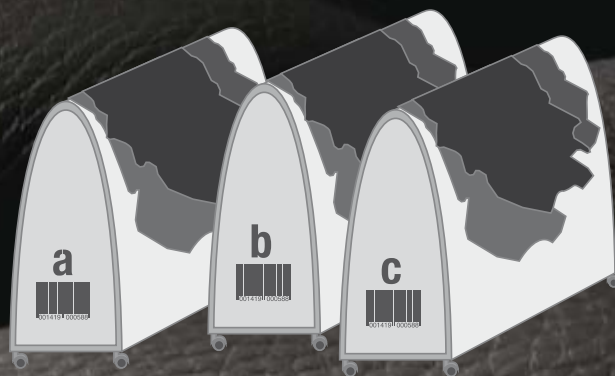
scan **expert** automatic: Efficient quality assurance for your hides and management of your leather stock

- Control your incoming leather and administrate your leather stock
- Your quality assurance starts with the scanning of your leather
- Optimize the yield of your hides
- Reduce complains
- Make your leather data available across your global enterprise



pre-select **expert**: Classify your leather into categories

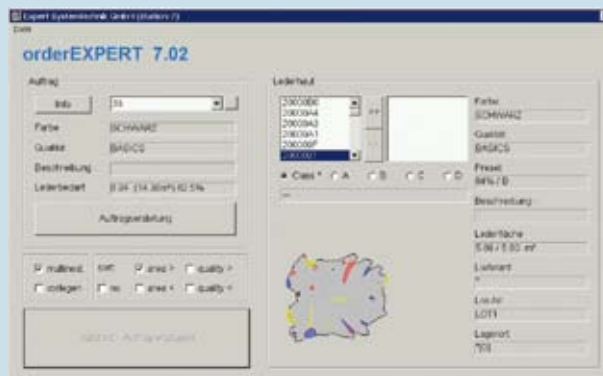
- Classify your assorted leather hides automatically within a few seconds
- Set the parameters for the internal classification of your leather
- Identify your leather precisely and very easily
- Choose your leather for the creation of orders from up to three categories
- Be certain in the global administration of your different production lines of business



scanning

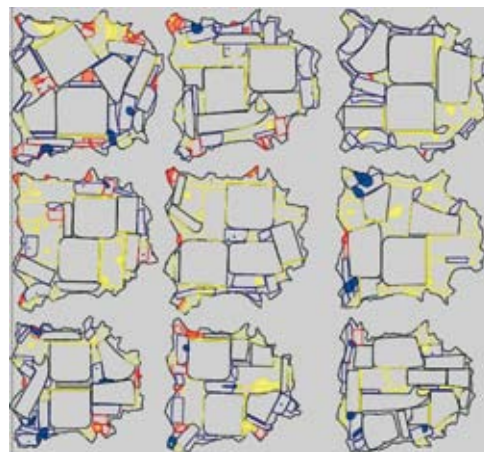
order **expert**: Optimise your working processes

- Prepare your nesting orders at a separate workstation
- Create a nesting order by individual compilation of hides and patterns
- Combine different models and customer orders to one manufacturing order
- Reuse saved customer orders



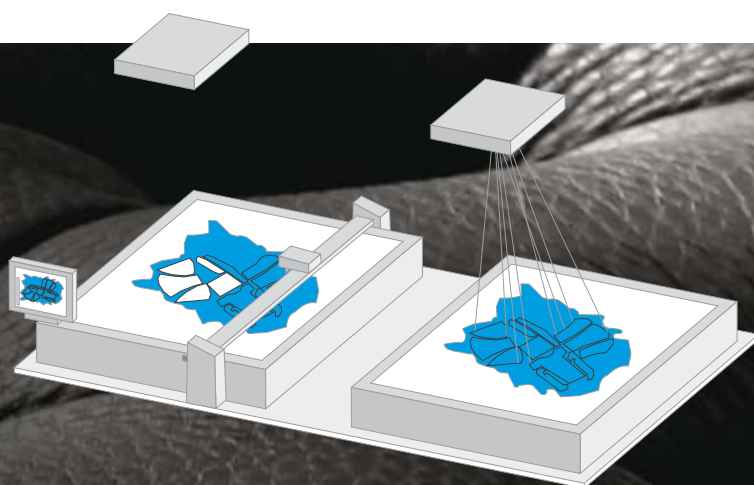
nest **expert** multineest: Your maximum yield when nesting hides simultaneously

- Increase your efficiency and productivity automatically
- Optimize 2-100 hides simultaneously
- Discover the yield of all hides in the order before cutting
- Use multineest for your precalculation
- Combine automatic and interactive optimization



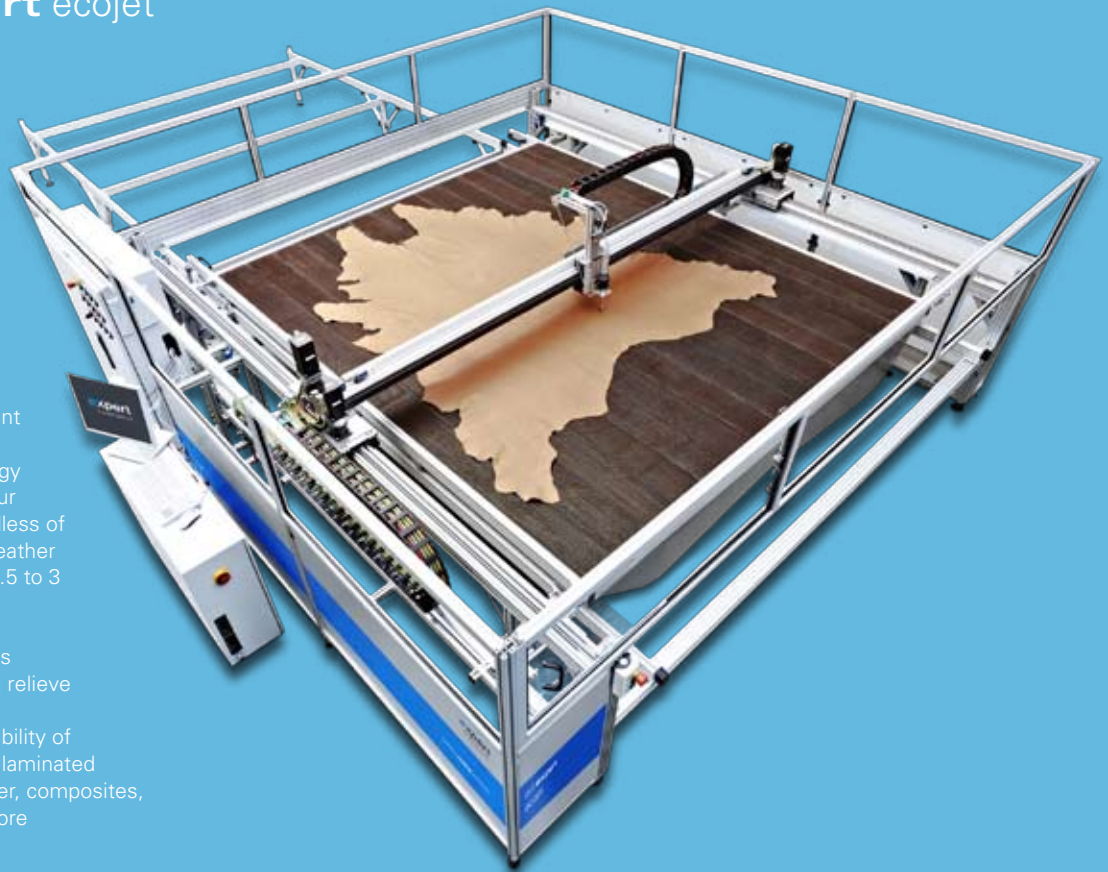
The perfect solution for your leather with shade variations is called nest **expert** visualnest

- Manual nesting directly on the leather hide assisted by laser or projector
- Nest according to variations of colours and grains on the leather
- Combine automatic and interactive optimization
- Discover the yield of each hide prior to cutting it
- Keep in touch with your production at any time



nesting

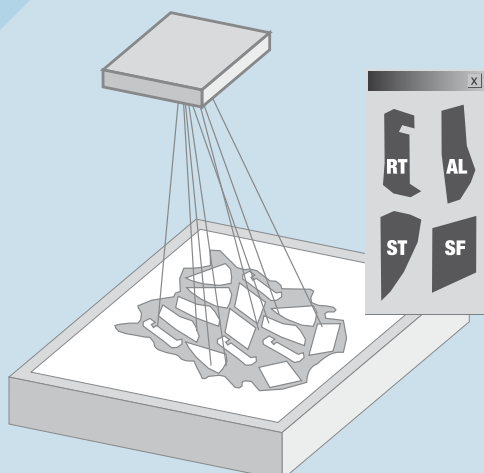
Multi-functional cutting with cut **expert** ecojet



- High speed and constant precision when cutting with waterjet-technology
- Cut the contours of your patterns exactly regardless of the thickness of your leather
- Average cutting time 1.5 to 3 minutes per hide
- No use of plastic foil
- Hardly any tool changes
- Reduce your costs and relieve the environment
- Allow yourself the flexibility of different materials like laminated materials, carton, rubber, composites, foam, foil and many more

With pick-up **expert** you sort all of your cut pieces for the next step directly after cutting

- You sort all cut pieces for the sewing directly after cutting
- Make use of the optional sorting system at your waterjet cutter
- The laser shows you your individual groups of patterns
- Increase the efficiency of your employees and avoid annoying after-sorting

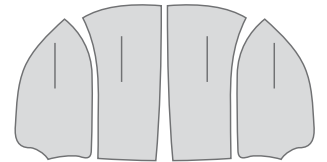


Cut several material sheets at the same time on only one cutting table with skin **expert**

- Cut several small hides simultaneously on only one table
- Make use of this option for cutting small split- or bycast leather hides
- Use skin **expert** for cutting your samples on carton
- Benefit from all advantages of the preceding **expert** software stages

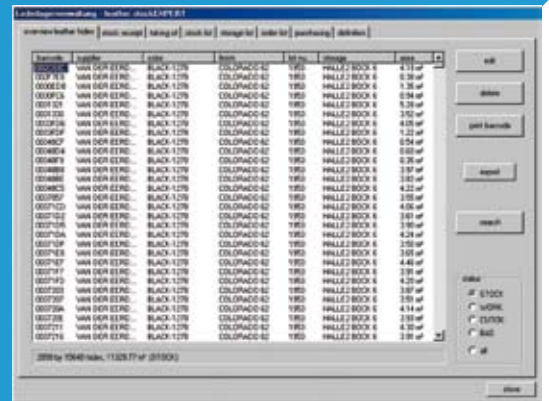
Your pattern manager: flexible and simple with pattern **expert**

- Optimize the data capture of your patterns
- Benefit from the clearly defined model manager
- Be flexible with any modification of your patterns
- Import your data from other CAD systems without complications
- Use your model data across many industries
- Create your groups according to your sewing plan



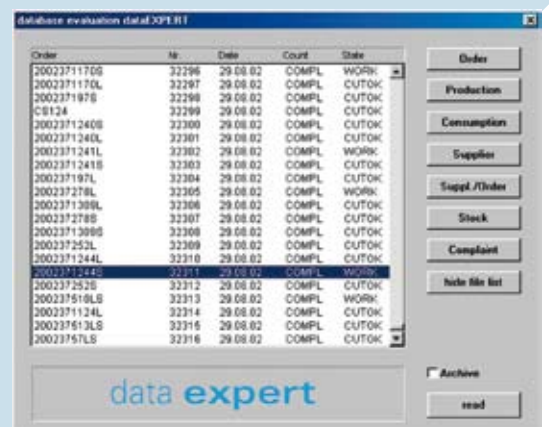
scan **expert** leatherstock: Your efficient leather stock management

- Be flexible in the allocation of leather to orders
- Control your leather consumption and manage your leather stock automatically
- Control your leather stock values straight-away with one overview
- Use this efficient support for physical stocktaking
- Combine scan **expert** leatherstock with your current management system



data **expert**: Your overview of production and management of your leather stock

- Use the detailed production overview when cutting leather hides
- Have an overview of the daily efficiency of your production process
- Inform yourself about historic leather consumption figures
- Use the complete database for calculations in your purchase department
- Administrate your leather stock and compare your suppliers



controlling



ES032017

we think in **cutting** solutions.

expert systemtechnik gmbh
Broeninghauser Strasse 35 e
33729 Bielefeld • Germany
Tel.: +49 5 21 / 9 59 67-0
Fax: +49 5 21 / 9 59 67-10
info@expertsystemtechnik.de
www.expertsystemtechnik.de