



Settle back into your armchair

An **expert** optimizes
your production

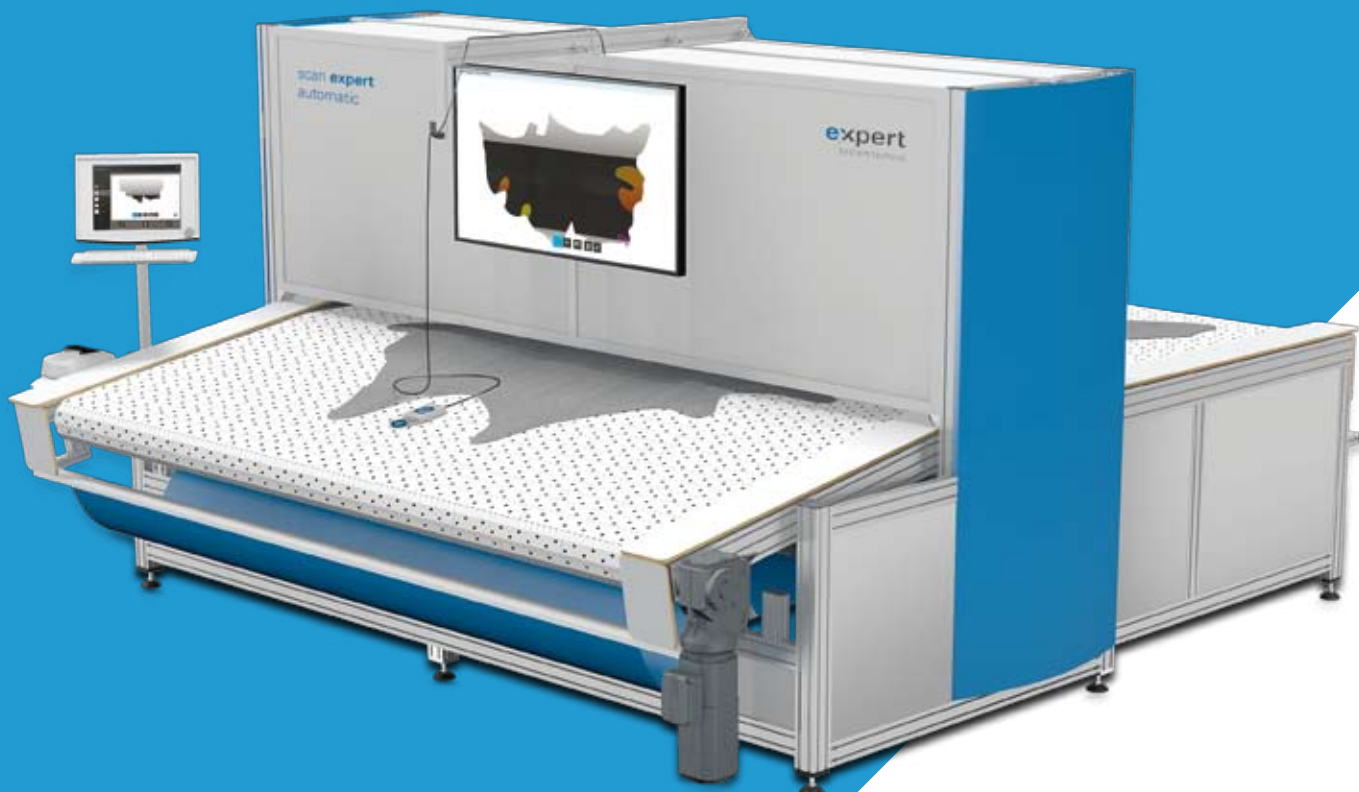
Upholstery / Furniture

English

expert
systemtechnik

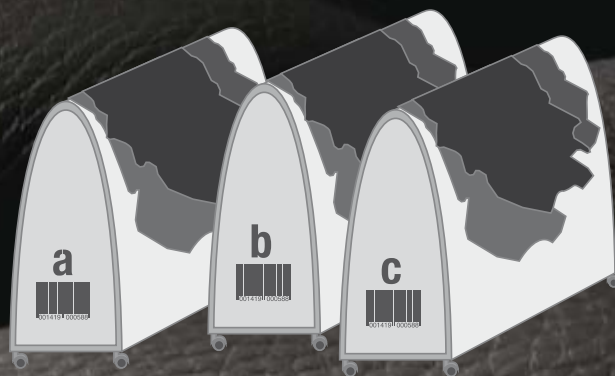
scan **expert** automatic: Efficient quality assurance for your hides and management of your leather stock

- Control your incoming leather and administrate your leather stock
- Your quality assurance starts with the scanning of your leather
- Optimize the yield of your hides
- Reduce complains
- Make your leather data available across your global enterprise



pre-select **expert**: Classify your leather into categories

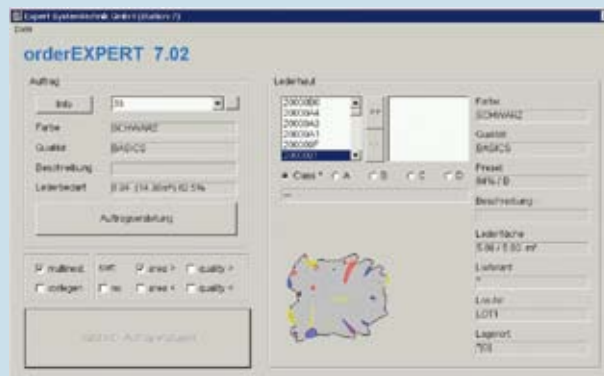
- Classify your assorted leather hides automatically within a few seconds
- Set the parameters for the internal classification of your leather
- Identify your leather precisely and very easily
- Choose your leather for the creation of orders from up to three categories
- Transparent overview of qualified leather inventory



scanning

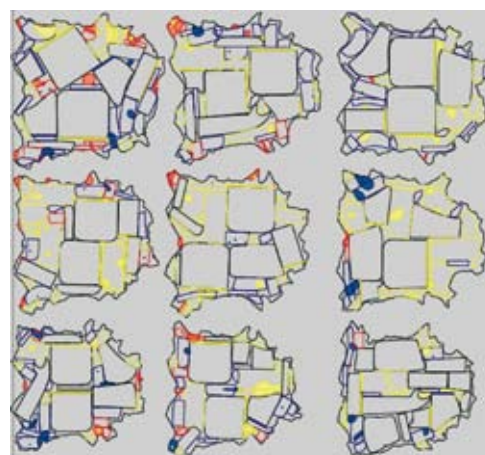
order **expert**: Optimise your working processes

- Prepare your nesting orders at a separate workstation
- Create a nesting order by individual compilation of hides and patterns
- Combine different models and customer orders to one manufacturing order
- Reuse saved customer orders



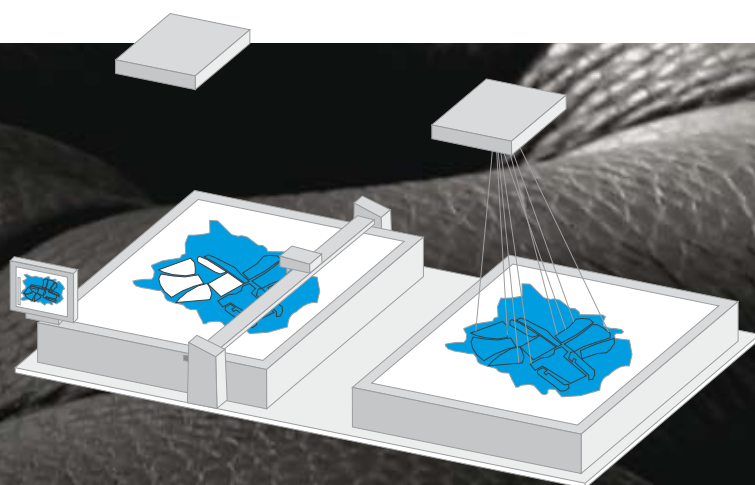
nest **expert** multineest: Your maximum yield when nesting hides simultaneously

- Increase your efficiency and productivity automatically
- Optimize 2-100 hides simultaneously
- Discover the yield of all hides in the order before cutting
- Use multineest for your precalculation
- Combine automatic and interactive optimization



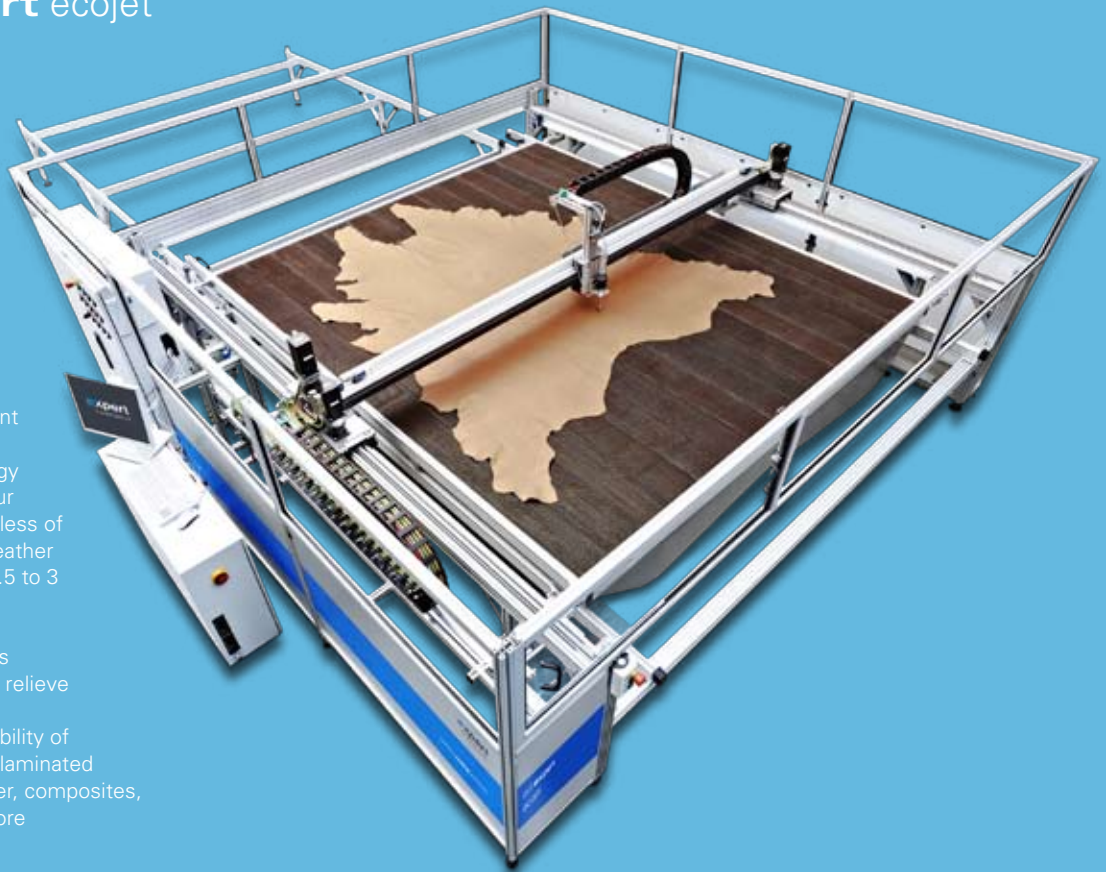
The perfect solution for your leather with shade variations is called nest **expert** visualnest

- Manual nesting directly on the leather hide assisted by laser or projector
- Nest according to variations of colours and grains on the leather
- Combine automatic and interactive optimization
- Discover the yield of each hide prior to cutting it
- Keep in touch with your production at any time



nesting

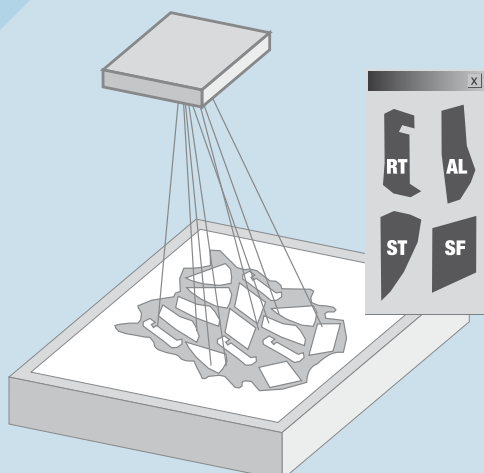
Multi-functional cutting with cut **expert** ecojet



- High speed and constant precision when cutting with waterjet-technology
- Cut the contours of your patterns exactly regardless of the thickness of your leather
- Average cutting time 1.5 to 3 minutes per hide
- No use of plastic foil
- Hardly any tool changes
- Reduce your costs and relieve the environment
- Allow yourself the flexibility of different materials like laminated materials, carton, rubber, composites, foam, foil and many more

With pick-up **expert** you sort all of your cut pieces for the next step directly after cutting

- You sort all cut pieces for the sewing directly after cutting
- Make use of the optional sorting system at your waterjet cutter
- The laser shows you your individual groups of patterns
- Increase the efficiency of your employees and avoid annoying after-sorting

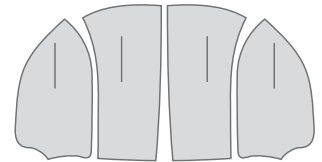
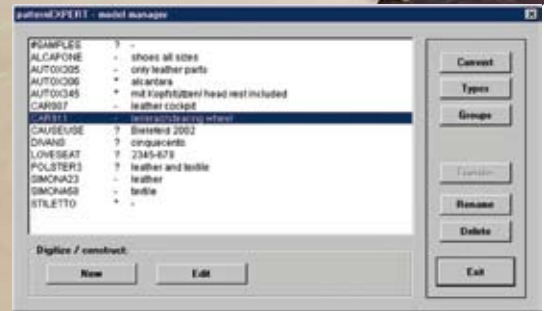


Cut several material sheets at the same time on only one cutting table with skin **expert**

- Cut several small hides simultaneously on only one table
- Make use of this option for cutting small split- or bycast leather hides
- Use skin **expert** for cutting your samples on carton
- Benefit from all advantages of the preceding **expert** software stages

Your pattern manager: flexible and simple with pattern **expert**

- Optimize the data capture of your patterns
- Benefit from the clearly defined model manager
- Be flexible with any modification of your patterns
- Import your data from other CAD systems without complications
- Use your model data across many industries
- Create your groups according to your sewing plan



scan **expert** leatherstock: Your efficient leather stock management

- Be flexible in the allocation of leather to orders
- Control your leather consumption and manage your leather stock automatically
- Control your leather stock values straight-away with one overview
- Use this efficient support for physical stocktaking
- Combine scan **expert** leatherstock with your current management system

Material	Supplier	Color	Type	Stock	Unit	Price	Value
000018	VWA DOR EERLE	BLACK 1176	COLORADO 42	1983	HALLEZ BOEK 8	4.11	8.13
000019	VWA DOR EERLE	BLACK 1176	COLORADO 42	1983	HALLEZ BOEK 8	6.38	12.64
000020	VWA DOR EERLE	BLACK 1176	COLORADO 42	1983	HALLEZ BOEK 8	5.26	10.51
000021	VWA DOR EERLE	BLACK 1176	COLORADO 42	1983	HALLEZ BOEK 8	6.24	12.48
000022	VWA DOR EERLE	BLACK 1176	COLORADO 42	1983	HALLEZ BOEK 8	5.26	10.51
000023	VWA DOR EERLE	BLACK 1176	COLORADO 42	1983	HALLEZ BOEK 8	6.24	12.48
000024	VWA DOR EERLE	BLACK 1176	COLORADO 42	1983	HALLEZ BOEK 8	5.26	10.51
000025	VWA DOR EERLE	BLACK 1176	COLORADO 42	1983	HALLEZ BOEK 8	6.24	12.48
000026	VWA DOR EERLE	BLACK 1176	COLORADO 42	1983	HALLEZ BOEK 8	5.26	10.51
000027	VWA DOR EERLE	BLACK 1176	COLORADO 42	1983	HALLEZ BOEK 8	6.24	12.48
000028	VWA DOR EERLE	BLACK 1176	COLORADO 42	1983	HALLEZ BOEK 8	5.26	10.51
000029	VWA DOR EERLE	BLACK 1176	COLORADO 42	1983	HALLEZ BOEK 8	6.24	12.48
000030	VWA DOR EERLE	BLACK 1176	COLORADO 42	1983	HALLEZ BOEK 8	5.26	10.51
000031	VWA DOR EERLE	BLACK 1176	COLORADO 42	1983	HALLEZ BOEK 8	6.24	12.48
000032	VWA DOR EERLE	BLACK 1176	COLORADO 42	1983	HALLEZ BOEK 8	5.26	10.51
000033	VWA DOR EERLE	BLACK 1176	COLORADO 42	1983	HALLEZ BOEK 8	6.24	12.48
000034	VWA DOR EERLE	BLACK 1176	COLORADO 42	1983	HALLEZ BOEK 8	5.26	10.51
000035	VWA DOR EERLE	BLACK 1176	COLORADO 42	1983	HALLEZ BOEK 8	6.24	12.48
000036	VWA DOR EERLE	BLACK 1176	COLORADO 42	1983	HALLEZ BOEK 8	5.26	10.51
000037	VWA DOR EERLE	BLACK 1176	COLORADO 42	1983	HALLEZ BOEK 8	6.24	12.48
000038	VWA DOR EERLE	BLACK 1176	COLORADO 42	1983	HALLEZ BOEK 8	5.26	10.51
000039	VWA DOR EERLE	BLACK 1176	COLORADO 42	1983	HALLEZ BOEK 8	6.24	12.48
000040	VWA DOR EERLE	BLACK 1176	COLORADO 42	1983	HALLEZ BOEK 8	5.26	10.51

data **expert**: Your overview of production and management of your leather stock

- Use the detailed production overview when cutting leather hides
- Have an overview of the daily efficiency of your production process
- Inform yourself about historic leather consumption figures
- Use the complete database for calculations in your purchase department
- Administrate your leather stock and compare your suppliers

Order	Id	Date	Count	State
20023711708	32296	29.08.02	COMPL	WORK
2002371170L	32297	29.08.02	COMPL	CUTOK
2002371978	32298	29.08.02	COMPL	CUTOK
CB124	32299	29.08.02	COMPL	CUTOK
20023712408	32300	29.08.02	COMPL	CUTOK
2002371240L	32301	29.08.02	COMPL	CUTOK
2002371241L	32302	29.08.02	COMPL	WORK
20023712418	32303	29.08.02	COMPL	CUTOK
2002371978L	32304	29.08.02	COMPL	CUTOK
200237278L	32305	29.08.02	COMPL	WORK
2002371308L	32306	29.08.02	COMPL	CUTOK
2002372788	32307	29.08.02	COMPL	CUTOK
20023713088	32308	29.08.02	COMPL	CUTOK
200237252L	32309	29.08.02	COMPL	CUTOK
2002371244L	32310	29.08.02	COMPL	CUTOK
20023712448	32311	29.08.02	COMPL	WORK
2002372528	32312	29.08.02	COMPL	CUTOK
2002375108L	32313	29.08.02	COMPL	WORK
2002371124L	32314	29.08.02	COMPL	CUTOK
2002375138L	32315	29.08.02	COMPL	CUTOK
200237578L	32316	29.08.02	COMPL	CUTOK

controlling



ES042017

we think in **cutting** solutions.

expert systemtechnik gmbh
Broeninghauser Strasse 35 e
33729 Bielefeld • Germany
Tel.: +49 5 21 / 9 59 67-0
Fax: +49 5 21 / 9 59 67-10
info@expertsystemtechnik.de
www.expertsystemtechnik.de